


SoftScan Web Security Service

External filtering and scanning – on your own terms



The traditional ways of securing your internet traffic with an internal filter, is no longer sufficient. To make your company's surfing secure, you need to take control of your Internet traffic.

IT criminals utilise the weaknesses of an open and dynamic Internet to spread malware, which can appear anywhere and when you least expect it. Malware is now the greatest risk factor when browsing on websites and using messaging services.

Gone are the days of inconvenient maintenance and updating of various solutions to control your company's Internet traffic!

SoftScan Web Security protects your company's web traffic so all users can access the Internet securely and productively and in compliance with your IT-policy. No installation of software and hardware is required, and no troublesome maintenance of updates to worry about.

Protect your company's Internet traffic – without investing in hardware and software

SoftScan safeguards your web traffic with an intelligent solution, which covers both known and unknown malware threats.

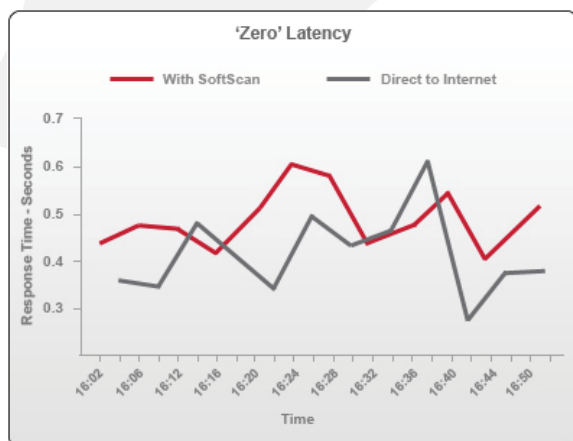
The SoftScan Web Security is a hosted service, which means that there is no need for the installation or updating of software – the solution is updated and optimised on an ongoing basis using the data gathered from the traffic SoftScan handles.

Implementation of the service is simple. Once set-up, the service is managed from the administration module, which provides real-time reports and trends and allows for the setting up of individual rules, etc.

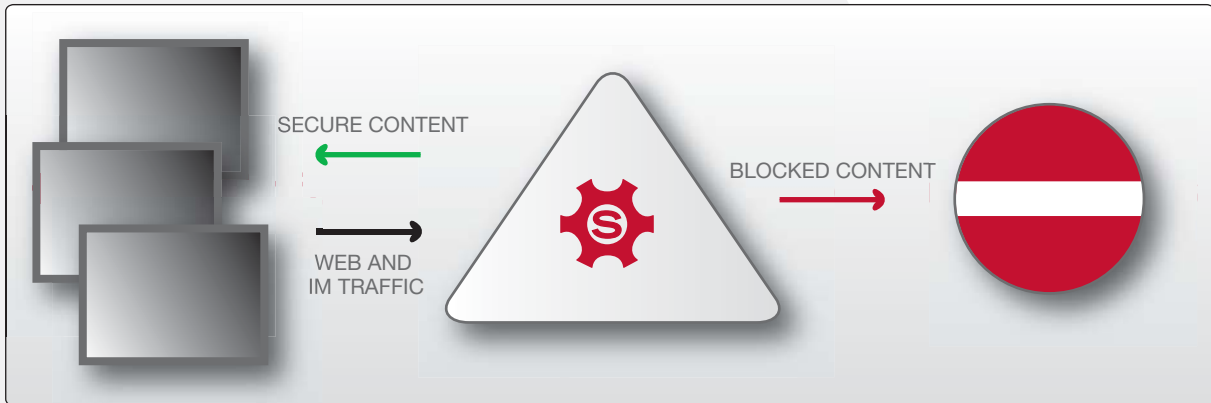
The SoftScan Web Security Service provides several advantages:

- **Total web security:** The service scans both inbound and outbound web traffic, Instant Messaging traffic and rule-based traffic. The entire content of websites are scanned including banners, scripts, Hotmail traffic, etc. and the user receives notification if the content is blocked.
- **Easy administration and reporting:** The web-based administration module provides real-time reporting of blocked malware and control over web rules.
- **Scanning in real-time:** All traffic is scanned for malware in real-time, without a noticeable delay to the user (30 m/s). Spyware and viruses are stopped at the Internet level before they can infiltrate your network and damage or infect an organisation's computers.

- **Supports an organisation's Internet policy:** You can control web rules for users and groups by URL categories, types of content and time intervals. This also means that as a company, you can comply with your own or industry-regulated requirements for employee behaviour on the Internet.
- **Resource-saving:** With an external, hosted solution, there is no need for a company to invest in the installation or operation of hardware and software, including updating antivirus software.
- **Pro-active scanning:** The solution uses several leading virus scanners combined with heuristic scanning, which pro-actively captures as yet unknown malware. This means that the company is protected against all types of virus attacks – including those not yet discovered by traditional antivirus scanners.
- **Protects remote employees:** With the Anywhere+ option, the service protects remote employees wherever they are working from; at home, a hotel, the airport etc. Performance and bandwidth issues when using VPN are eliminated – Anywhere+ enhances privacy by automatically encrypting all Web traffic when a user connects to a public network.
- **AD integration:** SoftScan Web Security Service can be integrated into an organisation's Active Directory, which eases the administration of rules and the showing of, for example, reports split into departments.



Source: SoftScan Threat Center



An organisation's web and messaging traffic is directed through SoftScan Web Security, which scans websites and Internet communication according to thousands of rules. Only secure traffic is sent on. The user receives a notification if the requested content is blocked.

Components of the SoftScan Web Security Service

There are three elements in the service:

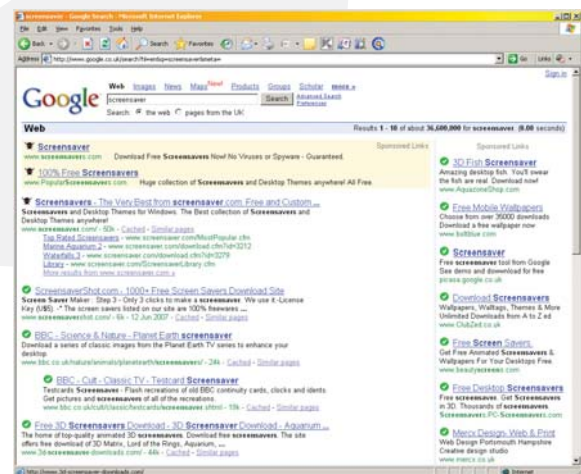
- **Web Malware Scanning**
- **Web Filtering**
- **Instant messaging (IM) Control**

Web Malware Scanning stops spyware and viruses at the Internet level before they can infiltrate your network and damage or infect the company's computers. Web Malware Scanning includes inbound and outbound tracking of new and known malware threats, including possible malware communication. The solution uses the security platform "Outbreak Intelligence", combining several industry leading antivirus scanners with heuristic scanning, which pro-actively captures yet unknown malware.

Outbreak Intelligence uses several signature-based anti-malware scanning engines, reputation and behaviour tracking engines and automatic computer intelligence development to capture new malware and avoid 'false positives'. The combination of tracking technologies, automatic computer intelligence and the industry's largest web dataset, makes Outbreak Intelligence the most effective solution against new web malware attacks.

Web Filtering makes it easy to manage your organisation's Internet policy. The configuration is carried out easily in the administration module where several URL categories (50+), content and file types are pre-defined. Access policies can be created at user or group level and in so doing be adapted to

the various areas of the organisation. There is also extensive activity reporting at user, department and company levels.



One unique function in Web Filtering is **SearchAhead** which scans search results from sites such as Google in real-time and supports an organisation's Internet policy with visual marking of uncertain and unauthorised websites. This feature protects a user directly when searching on the Internet and ensures that they do not accidentally visit infected or inappropriate websites.

IM Control enables you to manage the increasing use of Instant Messaging, such as Windows Messenger and Yahoo!. With IM Control you can manage and standardise your IM network, monitor user behaviour and create your own reports.

Reporting

Complete overview and central operation

The administration module, "SoftScan Manager", provides an immediate overview as the user logs in. The overview pages deliver up to date information of your Web Security Service including:

- Statistics
- Real-time reporting of blocked malware
- Overview of web security trends and data
- Overview by user, department and company levels.
- Real-time management of web and IM rules for users and groups

Report data about a company's web traffic can only be accessed by the administrator.

Automatic reporting

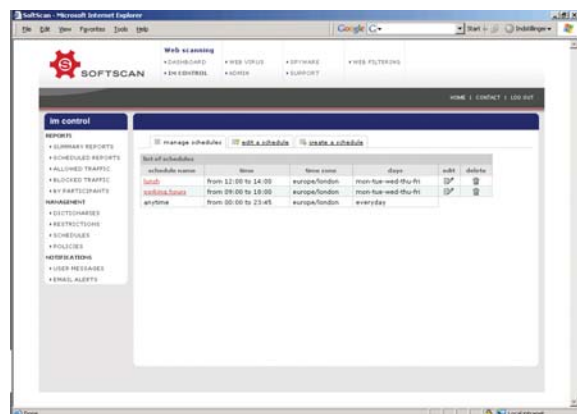
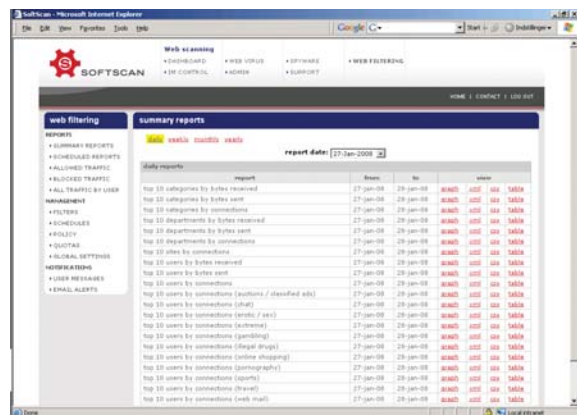
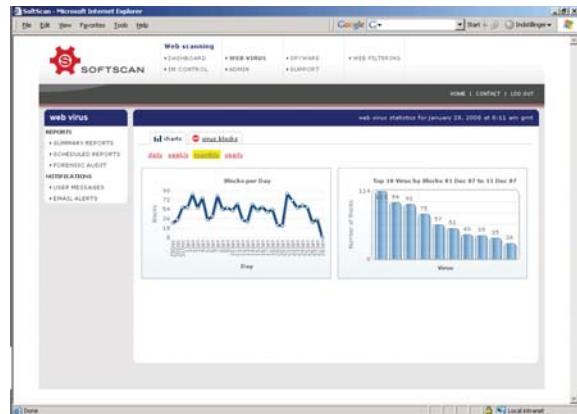
Reports can also be defined to be sent automatically at fixed intervals to administrators or management. Recipients of the reports must belong to one of the company's registered domains.

Service security

SoftScan's Service Level Agreement (SLA) guarantees a high quality solution; in terms of operation, support and functionality. With worldwide distributed data centres, extensive redundancy and innumerable high-speed network connections, a 99.999% uptime of the solution is guaranteed.

Support

If you have any questions about the service, SoftScan Support is ready to help you on the telephone or by email on weekdays between 8.30 a.m.-10 p.m.



About SoftScan

SoftScan is a leading provider of managed security services for mail, web and instant messaging. SoftScan's services protect 7,000 private and public companies on a daily basis with a combination of market leading anti-malware scanners and proactive heuristic scanning, enabling users to use the internet securely and productively. SoftScan enables organisations to have central control and a comprehensive overview of their internet traffic, whilst eliminating the need for additional resources to maintain and update the service.

SoftScan was established in 2003 and employs more than 120 people today. Its services are sold in Denmark, Sweden, Norway, the UK and Germany and are used in more than 100 countries.

